

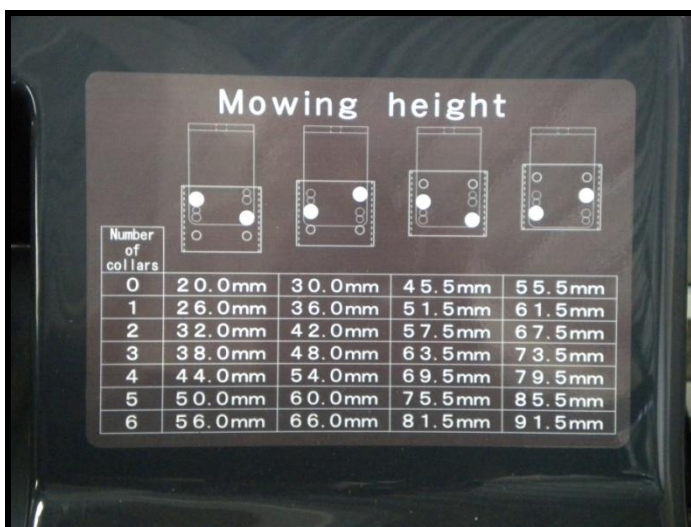
BARONESS GM2800 HEIGHT OF CUT ADJUSTMENT

Preparation

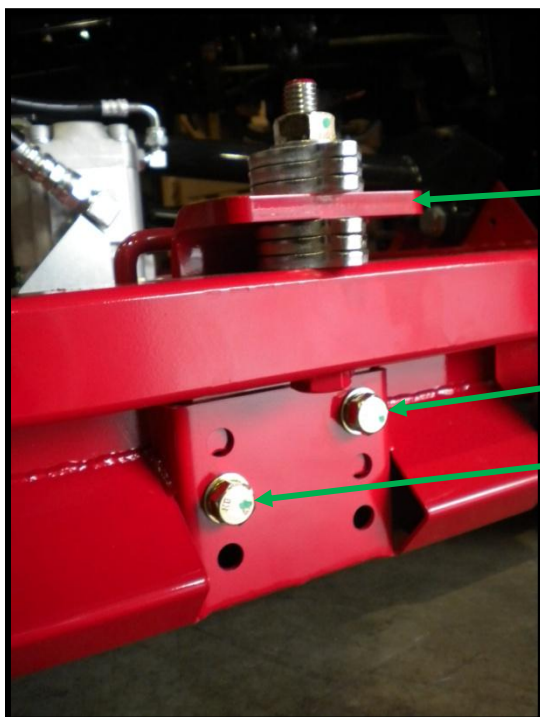


It is much easier to adjust the two rear units by swinging them out. In order to make this easier ensure that the removable pin is kept clean and greased. Periodic wire brushing of this pin prior to greasing will ease the removal of these pins. You will also find it easier to remove the pins and swing out the rear units if the machine is parked level ground.

Height of Cut Range



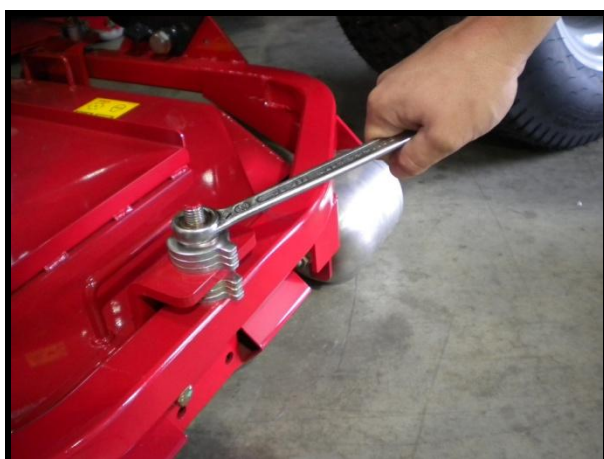
The Baroness GM2800 has four height of cut ranges as indicated on the decal which is located to the left of the operators seat. Each range is selected by changing the height adjustment brackets. The position of the bracket retaining bolts stipulates the range selection as indicated at the top of the decal. For example, the column shown second from the left will allow heights of cuts from 30mm to 66mm. This is selected by lining up the bolt holes 'top right and middle left', as indicated by the solid white dots which signifies bolt positions. This second column range is the most popular range for most applications and is the default setting of a new machine.



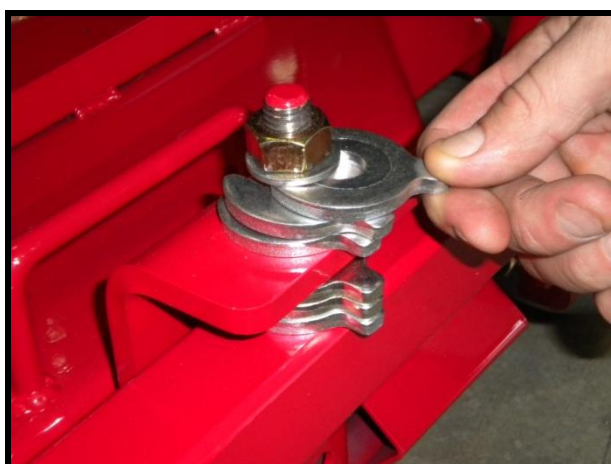
Height of cut Adjustment Bracket

Height of cut adjustment bracket retaining bolts. This photograph shows the bracket set in the default position with the bolts located 'top right and middle left'.

Adjusting the height of cut range



Loosen all three height adjustment shim retaining nuts. ***It is important to loosen all three nuts at once and not to try and adjust one bracket at a time.*** Trying to adjust one bracket at a time will make the task very difficult as this will have the effect of trying to twist the deck.



Remove all six of the shims from above and below the bracket. ***Again it is important to do this to all three positions at once and not to try doing one adjuster at a time.***



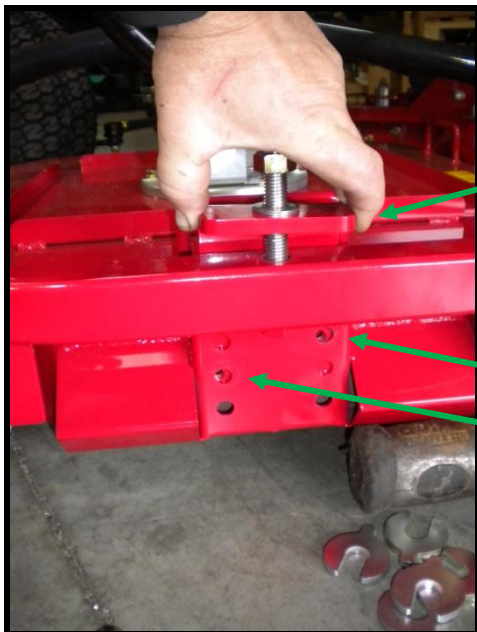
This photograph shows all of the shims removed from above and below the bracket. This should be done on all three units before proceeding.

All three adjusting brackets can now be moved to their new position. This can be done one bracket at a time.



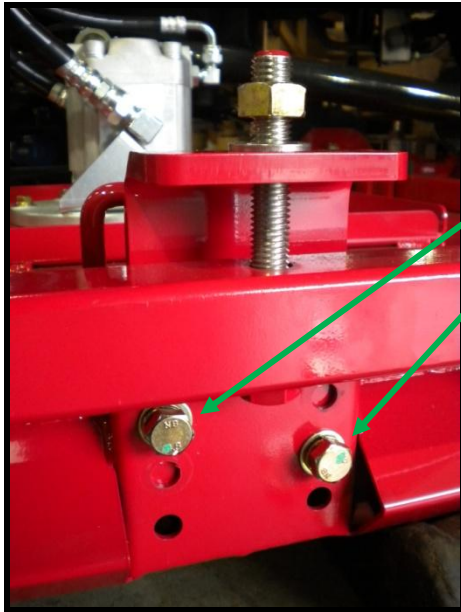
Support the deck underneath the bracket to be moved using a suitable item such as a mallet as shown.

Remove the two bracket retaining bolts.



With the bolts removed manoeuvre the bracket up or down until the desired holes are aligned as stipulated by the height setting decal.

With the desired holes lined up, refit the retaining bolts. Repeat this exercise for all three brackets.

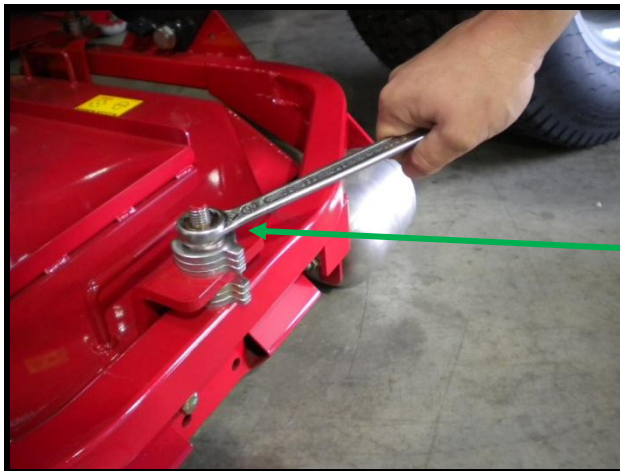


You can now see that the bolts have been inserted into their new position of 'top left and middle right'. If you refer back to the height chart decal you will see that this now puts this deck into the lowest range of 20 to 56mm.

Mowing height				
Number of collars	20.0mm	30.0mm	45.5mm	56.5mm
1	26.0mm	36.0mm	51.5mm	61.5mm
2	32.0mm	42.0mm	57.5mm	67.5mm
3	38.0mm	48.0mm	63.5mm	73.5mm
4	44.0mm	54.0mm	69.5mm	79.5mm
5	50.0mm	60.0mm	75.5mm	85.5mm
6	56.0mm	66.0mm	81.5mm	91.5mm

Changing height of cut

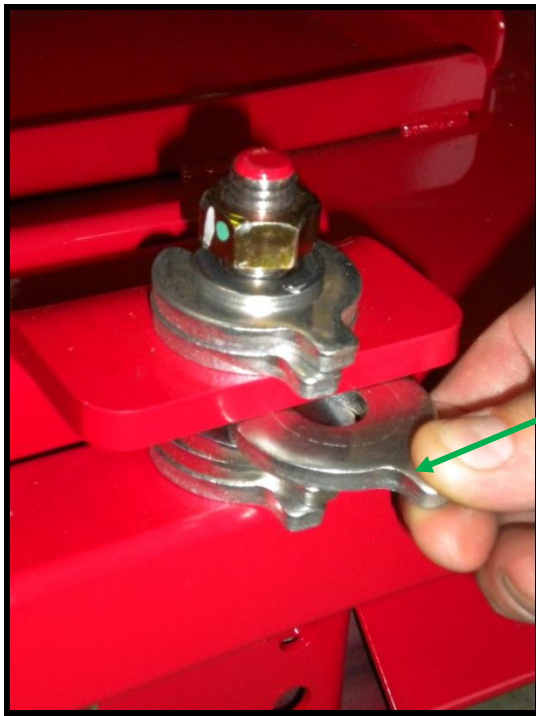
First of all make sure that the height of cut range is correct as explained above.



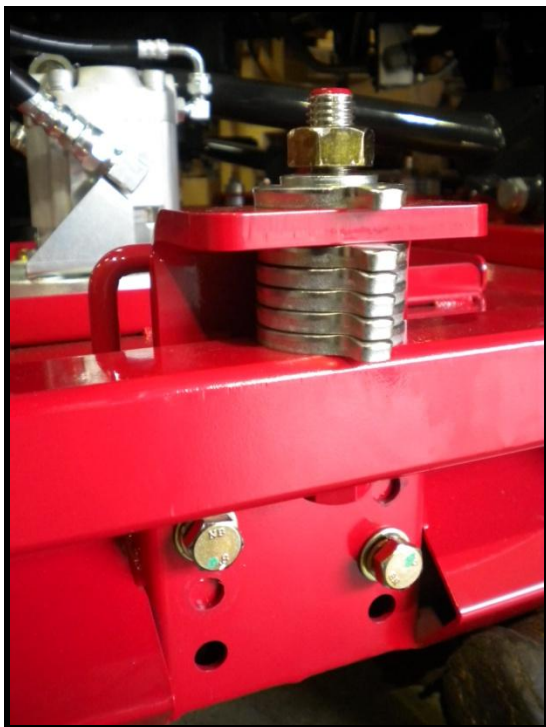
To adjust the height of cut, first of all loosen all three height adjustment shim retaining nuts. ***It is important to loosen all three nuts at once and not try to adjust one bracket at a time.*** Trying to adjust one bracket at a time will make the task very difficult as it will have the effect of trying to twist the deck.



Once all three nuts are loose, remove shims in order to achieve the desired pattern as stipulated on the height range decal. If you need to increase the height of cut you will need to remove shims from above the bracket and replace them below the bracket. To decrease height, remove them from below the bracket and replace them above the bracket.



This photograph shows a shim that has been removed from above the bracket being reinserted below the bracket in order to increase the height of cut. **Repeat this exercise for all three height adjustment brackets before attempting to tighten the adjuster shim retaining nuts.**



Once the shims on all three adjuster points have been moved to the desired position, tighten the retaining nuts firmly. **Do not leave them loose as this will cause the shims to fall out during operation.** This photograph shows the height range bolts selected to 'top left and middle right' with the shims arranged 'five below and one above'. This will give a height of cut of 50mm as shown on the height decal.

Mowing height

Number of collars	0	1	2	3
	20.0mm	26.0mm	32.0mm	38.0mm
	30.0mm	36.0mm	42.0mm	48.0mm
	45.5mm	51.5mm	57.5mm	63.5mm
	55.5mm	61.5mm	67.5mm	73.5mm
	61.5mm	67.5mm	73.5mm	79.5mm
	67.5mm	73.5mm	79.5mm	85.5mm
	73.5mm	79.5mm	85.5mm	91.5mm
	79.5mm	85.5mm	91.5mm	
	85.5mm	91.5mm		
	91.5mm			

Repeat this exercise for all five decks.

Postadress:

TRÄDGÅRDSTEKNIK AB
Helsingborgsvägen 578, Varalöv
262 96 ÄNGELHOLM

Telefon : 0431-222 90
Bg.nr : 5743-7980
Org.nr : 556409-6120

URL:

www.tradgardsteknik.se
E-postadress:
info@tradgardsteknik.se